

ROTATING ELECTRICS
ALTERNADOR, ARRANQUE Y SU PARTES

BEARING
RODAMIENTO

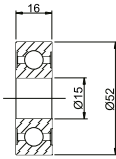
No. 10

International - Rotating Electrics Catalog - 07/2023-2024

Internacional - Catálogo de Alternador, Arranque y su Partes - 07/2023-2024

GR382

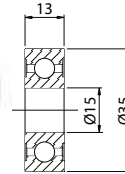
2RS/C3 (DDU)



FEATURES / CARACTERÍSTICAS: Ball Bearing
APPLICATION / APLICACIÓN: Toyota
REPLACES / REEMPLAZA: KOYO 382

GR2790

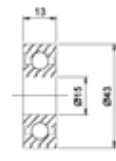
2RS/C3 (DDU)



FEATURES / CARACTERÍSTICAS: Ball Bearing
APPLICATION / APLICACIÓN: Alternator
 Honda: 31111-PD1-004; John Deere: AR88019;
 Nippondenso: 949100-3980; Toyota: 90099-10140

GR3190

2RS/C3 (DDU)



FEATURES / CARACTERÍSTICAS: Ball Bearing
APPLICATION / APLICACIÓN: Alternadores:
 Honda: 31114-PD1-004 / Nippondenso: 949100-2800, 949100-3290 / Toyota: 9099-10159
REPLACES / REEMPLAZA:
 DENSO: 949100-3190, 949100-3290
 CARGO: 140443

GR3330

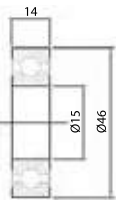
2RS/C3 (DDU)



FEATURES / CARACTERÍSTICAS: Ball Bearing
APPLICATION / APLICACIÓN: Alternator
 Nippondenso: 949100-4370; Toyota: 90099-10160, 90099-10192

GR3360

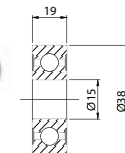
2RS/C3 (DDU)



FEATURES / CARACTERÍSTICAS: Ball Bearing
APPLICATION / APLICACIÓN: Alternator
 Honda: 31114-PD1-034; Nippondenso:
 949100-3380, 949100-4620; Toyota:
 90099-04966, 90099-10159, 90099-10161,
 90099-10199

GR3480

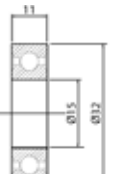
2RS/C3 (DDU)



FEATURES / CARACTERÍSTICAS: Ball Bearing
APPLICATION / APLICACIÓN:
 NIPPONDENSO: Alternator on Chevrolet,
 Daihatsu, Geo, Isuzu, Kubota, Suzuki, Toyota
REPLACES / REEMPLAZA:
PFI: 949100-3480; **CARGO:** 140461;
Koyo: DDG15382RDH1CM;
Nippondenso: 949100-3480, 949100-3481;
Toyota: 90099-10170

GR3660

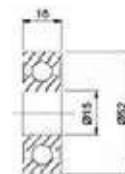
2RS/C3 (DDU)



FEATURES / CARACTERÍSTICAS: Ball Bearing
APPLICATION / APLICACIÓN: Alternator
 Nippondenso: 94910-3670

GR3820

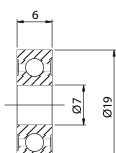
2RS/C3 (DDU)



FEATURES / CARACTERÍSTICAS: Ball Bearing
APPLICATION / APLICACIÓN:
 Toyota alternator: 90099-10178

GR607

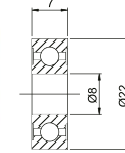
2RS/C3 (DDU)



FEATURES / CARACTERÍSTICAS: Ball Bearing
APPLICATION / APLICACIÓN:
 Black & Decker; Bosch; Dewalt; Makita: Power tools;
REPLACES / REEMPLAZA:
PFI: 607- 2RS C3;
NSK: 607DDMC3E;
Bosch: 2600905032

GR608

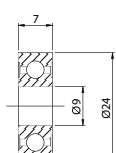
2RS/C3 (DDU)



FEATURES / CARACTERÍSTICAS: Ball Bearing
APPLICATION / APLICACIÓN: Industrial -
 Automotive Windows FORD; GM; VW

GR609

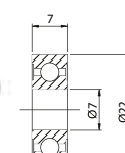
2RS/C3 (DDU)



FEATURES / CARACTERÍSTICAS: Ball Bearing
APPLICATION / APLICACIÓN:
 Black & Decker; Bosch; Dewalt; Makita: Power tools;
REPLACES / REEMPLAZA:
PFI: 609 - 2RS C3; **NSK:** 609DDMC3E

GR627

2RS/C3 (DDU)

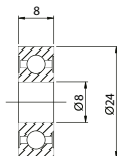


FEATURES / CARACTERÍSTICAS: Ball Bearing
APPLICATION / APLICACIÓN:
 Black & Decker; Bosch; Dewalt; Makita; Skill: Power tools;
REPLACES / REEMPLAZA:
NTN: 627LU; **PFI:** 627-2RS C3

GR628

2RS/C3 (DDU)

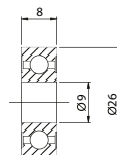
FEATURES / CARACTERÍSTICAS: Ball Bearing
APPLICATION / APLICACIÓN: Black & Decker; Bosch; Dewalt; Makita; Skill: Power tools;
mitsuba: SM402, SM512 PMGR and PMOSGR starters - Acura, Honda (CE);
REPLACES / REEMPLAZA:
Koyo: 628Z; **PFI:** 628-2RS C3



GR629

2RS/C3 (DDU)

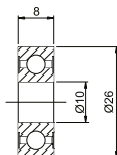
FEATURES / CARACTERÍSTICAS: Ball Bearing
APPLICATION / APLICACIÓN: Mitsubishi: OSGR + PLGR starters; Acura; Case; Dodge; Ford; Infiniti; Mazda; Mitsubishi; Nissan; Toro (armature); Prestolite: GJG Series Marine Generators (CE)
REPLACES / REEMPLAZA:
PFI: 629 - 2RS C3; **NSK:** 629-A-4DDMC3; **Bosch:** 2600905062; **Motorcraft:** MCE-432; **Prestolite:** 25-23, GJH-45



GR6000

2RS/C3 (DDU)

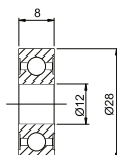
FEATURES / CARACTERÍSTICAS: Ball Bearing
APPLICATION / APLICACIÓN: For alternator Delco Remy. For various industrial applications



GR6001

2RS/C3 (DDU)

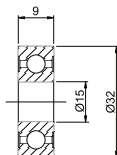
FEATURES / CARACTERÍSTICAS: Ball Bearing
APPLICATION / APLICACIÓN: For alternator Kia: Asia, Besta and Topic, embreagem CG125 (Honda). For various industrial applications.



GR6002

2RS/C3 (DDU)

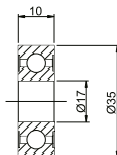
FEATURES / CARACTERÍSTICAS: Ball Bearing
APPLICATION / APLICACIÓN: For starter Delco Remy. For various industrial applications.



GR6003

2RS/C3 (DDU)

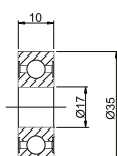
FEATURES / CARACTERÍSTICAS: Ball Bearing
APPLICATION / APLICACIÓN: For alternator Bosch, Magneti Marelli: Fiat Palio, Yamaha XT600. For various industrial applications.



GR6003DW

2RS/C3 (DDU)

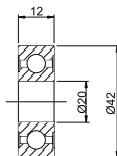
FEATURES / CARACTERÍSTICAS: Ball Bearing
APPLICATION / APLICACIÓN: Alternator M Marelli Fiat Palio.



GR6004

2RS/C3 (DDU)

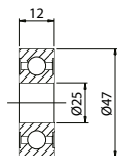
FEATURES / CARACTERÍSTICAS: Ball Bearing
APPLICATION / APLICACIÓN: For starter Mitsuba, hydraulic pump VW-11130, 13130, 14140. For various industrial applications.



GR6005

2RS/C3 (DDU)

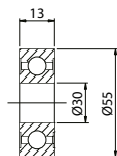
FEATURES / CARACTERÍSTICAS: Ball Bearing
APPLICATION / APLICACIÓN: Starter Motors 28MT (Volvo, Fiat Allis), Agricultural Equipments



GR6006

2RS/C3 (DDU)

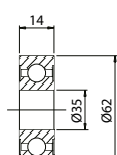
FEATURES / CARACTERÍSTICAS: Ball Bearing
APPLICATION / APLICACIÓN: Agricultural equipment, Automotive applications, Engine Maxion 3640, Frontal cover BR800



GR6007

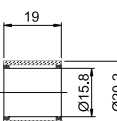
2RS/C3 (DDU)

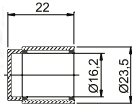
FEATURES / CARACTERÍSTICAS: Ball Bearing
APPLICATION / APLICACIÓN: Alternator Nissan Pathfinder, Gear Box Tractor



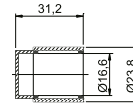
GR6012

FEATURES / CARACTERÍSTICAS: Needle Bearing
APPLICATION / APLICACIÓN: For starter Bosch and Mercedes-Benz.
REPLACES / REEMPLAZA:
Bosch: F 006 919 232; **INA:** SCE 1012

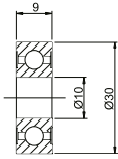


GR6013


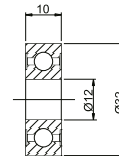
FEATURES / CARACTERÍSTICAS: Needle Bearing
APPLICATION / APLICACIÓN: For starter Bosch and Mercedes-Benz Till 7C
REPLACES / REEMPLAZA: Bosch: 2 000 910 013

GR6171


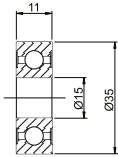
FEATURES / CARACTERÍSTICAS: Needle Bearing
APPLICATION / APLICACIÓN: For alternator Delco 55AMP.
REPLACES / REEMPLAZA: Delco: 9437171

GR6200
2RS/C3 (DDU)


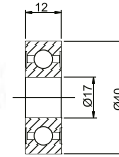
FEATURES / CARACTERÍSTICAS: Ball Bearing
APPLICATION / APLICACIÓN: For alternator Bosch/Wapsa. F350, F600, F700, F750, Ford Willis, Toyota 80235 For various industrial applications.

GR6201
2RS/C3 (DDU)


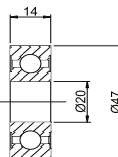
FEATURES / CARACTERÍSTICAS: Ball Bearing
APPLICATION / APLICACIÓN: For alternator Mercedes-Benz and light series (Fiat, GM, VW) - Bosch and Wapsa (lado colector).

GR6202
2RS/C3 (DDU)


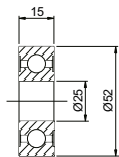
FEATURES / CARACTERÍSTICAS: Ball Bearing
APPLICATION / APLICACIÓN: For alternator (BOSCH - WAPSA) and starter(JE) (Bosch - Mercedes-Benz/VW).

GR6203
2RS/C3 (DDU)


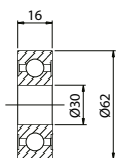
FEATURES / CARACTERÍSTICAS: Ball Bearing
APPLICATION / APLICACIÓN: For alternator Non comercial vehicles

GR6204
2RS/C3 (DDU)


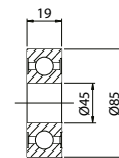
FEATURES / CARACTERÍSTICAS: Ball Bearing
APPLICATION / APLICACIÓN: For alternator Wapsa F1000, F4000 e Cargo.

GR6205
2RS/C3 (DDU)


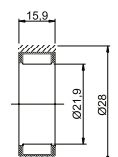
FEATURES / CARACTERÍSTICAS: Ball Bearing
APPLICATION / APLICACIÓN: Automotive and industrial Application

GR6206
2RS/C3 (DDU)


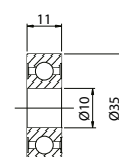
FEATURES / CARACTERÍSTICAS: Ball Bearing
APPLICATION / APLICACIÓN: Automotive and industrial Application

GR6209
2RS/C3 (DDU)


FEATURES / CARACTERÍSTICAS: Ball Bearing
APPLICATION / APLICACIÓN: Automotive and industrial Application

GR6216


FEATURES / CARACTERÍSTICAS: Needle Bearing
APPLICATION / APLICACIÓN: For starter Bosch and Mercedes-Benz(JE)
REPLACES / REEMPLAZA: INA: HK2216

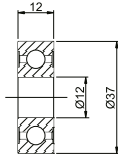
GR6300


FEATURES / CARACTERÍSTICAS: Ball Bearing
APPLICATION / APLICACIÓN: Industrial Application

GR6301

2RS/C3 (DDU)

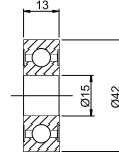
FEATURES / CARACTERÍSTICAS: Ball Bearing
APPLICATION / APLICACIÓN: For front wheel - Motorcycles For various industrial applications.



GR6302

2RS/C3 (DDU)

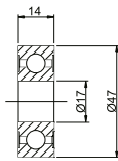
FEATURES / CARACTERÍSTICAS: Ball Bearing
APPLICATION / APLICACIÓN: For sheave MB 00625006302, for back wheel - Motorcycle. For various industrial applications.



GR6303

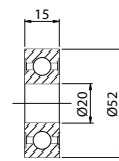
2RS/C3 (DDU)

FEATURES / CARACTERÍSTICAS: Ball Bearing
APPLICATION / APLICACIÓN: For alternator Mercedes-Benz LP 321, L/LO-608/708/709, LO-812, L-912, 1111, 1113, 1114, 1214, 1313, 1314, 1414, 1513, 1514, 1519, 1520, 1614, 2013, 2015, 2213, 2214, 2219, 2220, LS 1524, 0370, 0371(lado polia).



GR6304

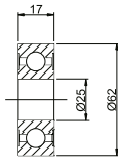
FEATURES / CARACTERÍSTICAS: Ball Bearing
APPLICATION / APLICACIÓN: Engine VW, Industrial Application, Trucks



GR6305

2RS/C3 (DDU)

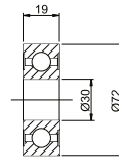
FEATURES / CARACTERÍSTICAS: Ball Bearing
APPLICATION / APLICACIÓN: For alternator Bosch - Lifter and Tractors Caterpillar. For various industrial applications.



GR6306

2RS/C3 (DDU)

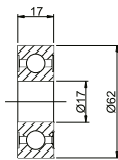
FEATURES / CARACTERÍSTICAS: Ball Bearing
APPLICATION / APLICACIÓN: For alternator Bosch T1/HD1 75 a 105A, for back wheel Townner. For various industrial applications.



GR6403

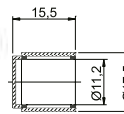
2RS/C3 (DDU)

FEATURES / CARACTERÍSTICAS: Ball Bearing
APPLICATION / APLICACIÓN: For alternator Bosch/MBB/Scania/Volvo (lado polia).



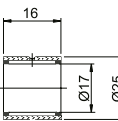
GR6713

FEATURES / CARACTERÍSTICAS: Needle Bearing
APPLICATION / APLICACIÓN: For Alternator Wapsa
REPLACES / REEMPLAZA: INA: Bk45713



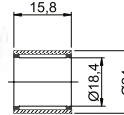
GR6716

FEATURES / CARACTERÍSTICAS: Needle Bearing
APPLICATION / APLICACIÓN: For Alternator Bosch 75A.
REPLACES / REEMPLAZA: Bosch: 9 121 456 113; INA: NK 17/16X



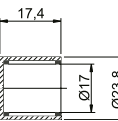
GR6816

FEATURES / CARACTERÍSTICAS: Needle Bearing
APPLICATION / APLICACIÓN: ...
REPLACES / REEMPLAZA: Bosch: 2 000 910 002; INA: HK 1816



GR6853

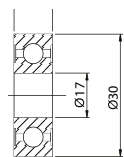
FEATURES / CARACTERÍSTICAS: Needle Bearing
APPLICATION / APLICACIÓN: For Alternator Wapsa Opala, Monza, D20.
REPLACES / REEMPLAZA: INA: BK45853



GR6903

2RS/C3 (DDU)

FEATURES / CARACTERÍSTICAS: Ball Bearing
APPLICATION / APLICACIÓN: HITACHI OSGR starters on Chevrolet, Isuzu, Nissan, Nissan Forklift, Pontiac, Thermoking, Volvo (armature)
REPLACES / REEMPLAZA: PFI: 6903-2RS C3; Hitachi: 2114-35502; Nissan: 23338-M4900; Thermoking: 77-1578



GR6904DDU

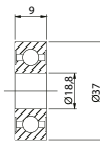
2RS/C3 (DDU)



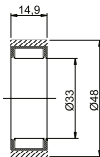
FEATURES / CARACTERÍSTICAS: Ball Bearing
APPLICATION / APLICACIÓN: Universal
REPLACES / REEMPLAZA: SKF: 6904DDU

GR6904DW

2RS/C3 (DDU)



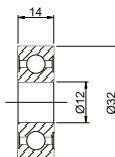
FEATURES / CARACTERÍSTICAS: Ball Bearing
APPLICATION / APLICACIÓN: Mitsubishi OSGR starters
REPLACES / REEMPLAZA: PFI: 6904DW; Cargo: 140412; Delco: 22516191; Mitsubishi: M410X14171

GR6916


FEATURES / CARACTERÍSTICAS: Roller Bearing
APPLICATION / APLICACIÓN: For Alternator KB
REPLACES / REEMPLAZA: Bosch: 2 000 910 005; INA: F-91916

GR62201

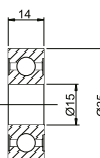
2RS/C3 (DDU)



FEATURES / CARACTERÍSTICAS: Ball Bearing
REPLACES / REEMPLAZA: Scania: 1314205
APPLICATION / APLICACIÓN: For alternatorS Mercedes-Benz 355, 362, 364, 608, 708, 709, 912, 1113, 1114, 1116, 1519, 1520, 1524, 1525, 1614, 1618, 1819, 1820, 1924, 1929, 1932, 1934, 2013, 2014, 2016, 2018, 2213, 2214, 2215, 2219, 2220, Scania 112K, 112S, 112R, 112T, 142E, 142MA, Volvo, Bus and Trucks.

GR62202

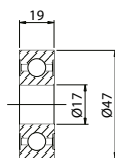
2RS/C3 (DDU)



FEATURES / CARACTERÍSTICAS: Ball Bearing
APPLICATION / APLICACIÓN: For alternator (Bosch - Scania/Mercedes-Benz -1938) For various industrial applications.

GR62303

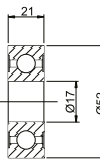
2RS/C3 (DDU)



FEATURES / CARACTERÍSTICAS: Ball Bearing
APPLICATION / APLICACIÓN: Industrial application, Alternator Magnetti Marelli Fiat, trucks, Tractors

GR62304

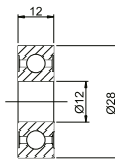
2RS/C3 (DDU)



FEATURES / CARACTERÍSTICAS: Ball Bearing
APPLICATION / APLICACIÓN: For alternator Bosch MBB, Scania, Volvo. For various industrial applications.

GR63001

2RS/C3 (DDU)



FEATURES / CARACTERÍSTICAS: Ball Bearing
APPLICATION / APLICACIÓN: For alternator Tipo, Tempra, F250, F1000 (HSD), Ranger, S10 2.5, Magneti Marelli - Tempra.

GR101011

2RS/C3 (DDU)



FEATURES / CARACTERÍSTICAS: Ball Bearing
APPLICATION / APLICACIÓN: Bearing Air conditioning. Several Nachi 1952> 2020

GR16100ZZ


FEATURES / CARACTERÍSTICAS:
APPLICATION / APLICACIÓN: Bearing To bearing Rear Match Engine Iskra Deutz Perkins Jungheinrich JCB Caterpillar Bomag Hamm JCB Volvo Atlas Copco Genie Haulotte

GR304720


FEATURES / CARACTERÍSTICAS: Ball Bearing
APPLICATION / APLICACIÓN: Bearing Air conditioning. FIAT: Palio Fire 2002> 2020

GR30BD5020


FEATURES / CARACTERÍSTICAS: Ball Bearing
APPLICATION / APLICACIÓN: Bearing Air conditioning. Focus Compressor Delphi CVC, Sanden 2001> 2020

GR30BGS10G

2RS/C3 (DDU)

FEATURES / CARACTERÍSTICAS: Ball Bearing
APPLICATION / APLICACIÓN: Bearing Air conditioning. Several dense 10PA15 / 17 1951> 2020



GR35BG05S10DST2

2RS/C3 (DDU)

FEATURES / CARACTERÍSTICAS: Ball Bearing
APPLICATION / APLICACIÓN: Bearing Air conditioning Miscellaneous: Citroën, Peugeot, GM, Honda, Nissan, Chrysler, Kia, Hyundai, Sanden, Seltec, Kiki



GR35BG05S7DL

2RS/C3 (DDU)

FEATURES / CARACTERÍSTICAS: Ball Bearing
APPLICATION / APLICACIÓN: Bearing Air conditioning: GM: Corsa 1994> 2012, Meriva 2002> 2012 Montana 2004> 2020; Mitsubishi Miscellaneous



GR38BG05S6DST2

2RS/C3 (DDU)

FEATURES / CARACTERÍSTICAS: Ball Bearing
APPLICATION / APLICACIÓN: Bearing Air conditioning. Fiat Palio 1.0 1996> 2020, Siena 1.0 1998> 2016; VW: Gol 1.0 1996> 2020, Parati 1.0 1998> 2004



GR40BGS11DS

2RS/C3 (DDU)

FEATURES / CARACTERÍSTICAS: Ball Bearing
APPLICATION / APLICACIÓN: Bearing Air conditioning GM: All Less Kadett 1.0 1989> 1998 Fiat Palio All Less 1.0 1996> 2020 All Less Tempra 1.0 1992> 1999 All Less Uno 1.0 1985> 2020 FORD: Escort 1985> 2003 TOYOTA: Bandeirante 1979> 2001. VW: Goal 1981 Parati 1985> 2013 All Less Quantum 1.0 1985> 2002 All Less Santana 1.0 1985> 2006 Several Mercedes-Benz, Volvo Trucks 1951> 2020



GR6559469

2RS/C3 (DDU)

FEATURES / CARACTERÍSTICAS: Ball Bearing
APPLICATION / APLICACIÓN: Bearing Air conditioning Several Chrysler, Mazda 1951> 2020



GR83A693A

2RS/C3 (DDU)

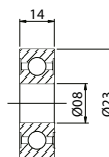
FEATURES / CARACTERÍSTICAS: Ball Bearing
APPLICATION / APLICACIÓN: Bearing Air conditioning Several Toyota, Mazda, Suzuki 1951> 2020



GR B8 23D

2RS/C3 (DDU)

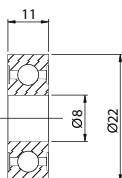
FEATURES / CARACTERÍSTICAS: Ball Bearing
APPLICATION / APLICACIÓN: Alternator Mitsubishi S930P 61201, SC8A05LHI, Tawner



GR B8 74D

2RS/C3 (DDU)

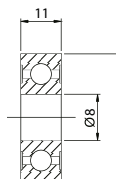
FEATURES / CARACTERÍSTICAS: Ball Bearing
APPLICATION / APLICACIÓN: Mitsubishi: IR/IF Alternators on Dodge, Mitsubishi, Nissan, Plymouth
REPLACES / REEMPLAZA:
PFI: B8-74D; **NSK:** B8-74T12, B8-74D;
Cargo: 140231; **Mitsubishi:** S930P17170



GR B8 79D

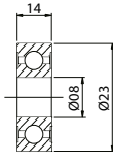
2RS/C3 (DDU)

FEATURES / CARACTERÍSTICAS: Ball Bearing
APPLICATION / APLICACIÓN: Mando: Alternators on Dodge, Eagle, Honda, Hyundai, Mazda, Mitsubishi, Nissan, Plymouth, Subaru, Toro; Mitsubishi: Alternators on Dodge, Eagle, Honda, Hyundai, Mazda, Mitsubishi, Nissan, Plymouth, Subaru, Toro
REPLACES / REEMPLAZA:
VHL: B8-79D; **PFI:** B8-79D; **NSK:** B8-79D, B8-79T12; **Cargo:** 140232; **Chrysler:** MD611150; **Mazda:** F81124503;
Mitsubishi: MD611150, S930P17970, S930P17971; **Nissan:** 23120-V5511



GR B8 85D

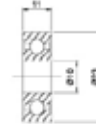
2RS/C3 (DDU)



FEATURES / CARACTERÍSTICAS: Ball Bearing
APPLICATION / APLICACIÓN: Alternator Ford E7GZ- 10A304-A, Mitsubishi S930P63670, Motorcraft GEE-312, Kia

GR B10 46D

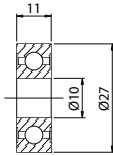
2RS/C3 (DDU)



FEATURES / CARACTERÍSTICAS: Ball Bearing
APPLICATION / APLICACIÓN: Hitachi Alternator: 6900BPL Alternator: John Deere

GR B10 50D

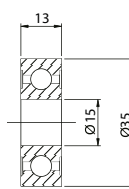
2RS/C3 (DDU)



FEATURES / CARACTERÍSTICAS: Ball Bearing
APPLICATION / APLICACIÓN: Alternator Hitachi 6000G, 6000HL, Nissan 23120-58S01, Subaru 23721-AA010, Gol GII / GIII / G IV, John Deere

GR B15 69D

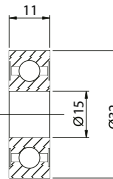
2RS/C3 (DDU)



FEATURES / CARACTERÍSTICAS: Ball Bearing
APPLICATION / APLICACIÓN: Mitsubishi: A2T Series Alternator
REPLACES / REEMPLAZA:
PFI: B15-69D; **NSK:** B15-69B-8T85G; **Cargo:** 140434; **Hitachi:** 6202NCT; **Mitsubishi:** S930P18301, S930P18370, S930P64301, S930P64370; **Nissan:** 23129-05E06; **NSK:** B1569T1XDDW1NCXCE, B15-69BT1X, B15-69D; **SKF:** 6202NCD

GR B15 70D

2RS/C3 (DDU)



FEATURES / CARACTERÍSTICAS: Ball Bearing
APPLICATION / APLICACIÓN: Denso Alternator; Hitachi: LR170-410, LR170-418; Mitsubishi: A3T02478
REPLACES / REEMPLAZA:
PFI: B15-70D;
Nippondenso: 949100-3670;
NSK: B15-70T1X

GR B15 83D

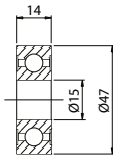
2RS/C3 (DDU)



FEATURES / CARACTERÍSTICAS: Ball Bearing
APPLICATION / APLICACIÓN: Chrysler alternator: MD 611410 Ford alternator: E8PZ-10094-A Mazda alternator: FE2H-18W27 Mitsubishi alternator: S930P18470 Motorcraft alternator: GEE-318 Nissan alternator: 23120-20P11

GR B15 86D

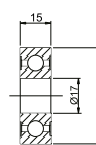
2RS/C3 (DDU)



FEATURES / CARACTERÍSTICAS: Ball Bearing
APPLICATION / APLICACIÓN: Alternator Chrysler MD611397, Ford E8GY- 10A303-A, Mazda F811-18-W27, Mitsubishi TMB303LUX, S930P63070, Motorcraft GEE 316, Nissan 23120-58S11

GR B17 52D

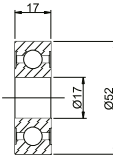
2RS/C3 (DDU)



FEATURES / CARACTERÍSTICAS: Ball Bearing
APPLICATION / APLICACIÓN: alternador KIA Poong Sung.

GR B17 99

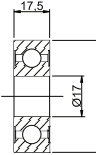
2RS/C3 (DDU)



FEATURES / CARACTERÍSTICAS: Ball Bearing
APPLICATION / APLICACIÓN: For alternator VW

GR B17 126

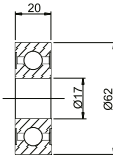
2RS/C3 (DDU)



FEATURES / CARACTERÍSTICAS: Ball Bearing
APPLICATION / APLICACIÓN: For alternator Bosch MBB 55 A.

GR B17 127

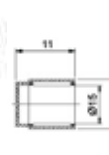
2RS/C3 (DDU)



FEATURES / CARACTERÍSTICAS: Ball Bearing
REPLACES / REEMPLAZA: Scania: 1387609
APPLICATION / APLICACIÓN: For alternator Bosch - MB, Scania 114/124, Volvo.

GRF95066

C3



FEATURES / CARACTERÍSTICAS: Ball Bearing
APPLICATION / APLICACIÓN: Alternator: Bosch/Wapsa (75 / 105 / 140A)
REPLACES / REEMPLAZA:
BOSCH: 1 900 910 024, 2 120 910 001
FAG: NU202ETVP2
INA: F-95066
SKF: NU202ECP